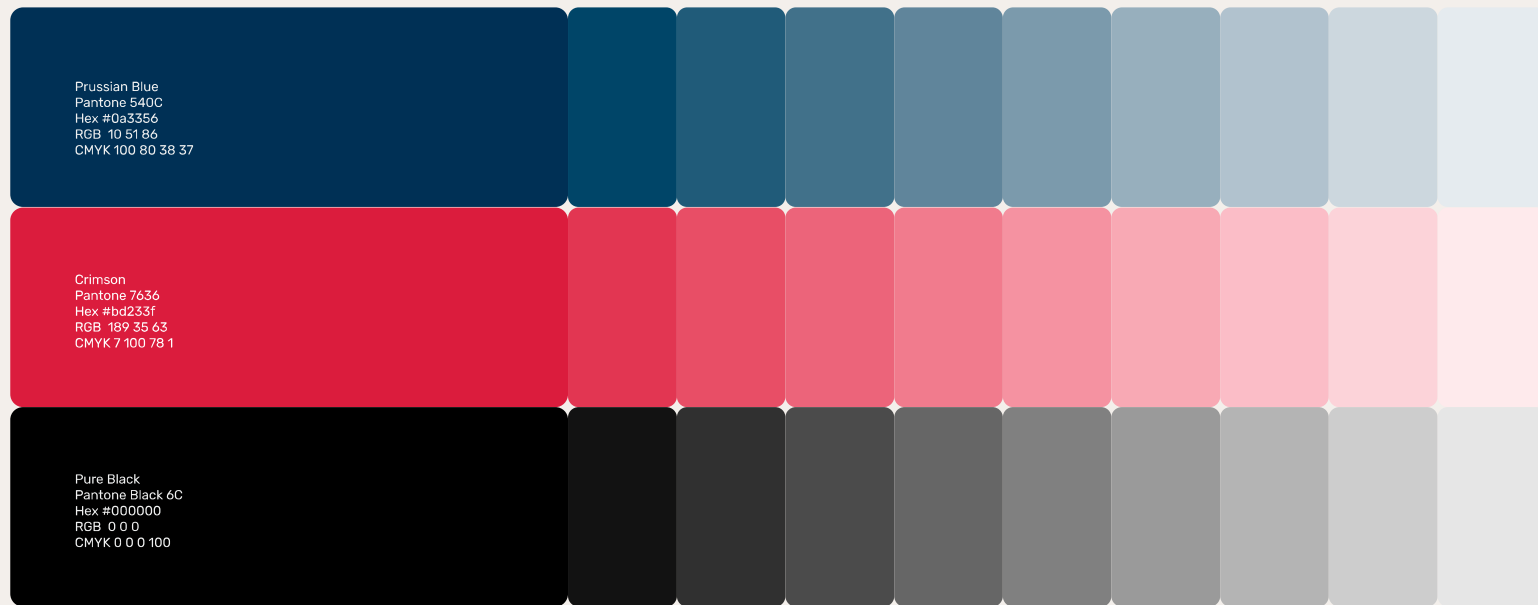


2.08 Main colors & tints

Recommended

Do use a white logo when working with dark background, except when on mid to light tones, when the highest contrast should be used.



2.09 Complementary colors

Main and complementary

 <p>Queen Blue Pantone 5405C Hex #4e7493 RGB 78 116 147 CMYK 82 46 27 4</p> <p> PROHASHING</p> <p>Main color sample</p>	 <p>Liberty Blue Pantone 4141C Hex #5265a2 RGB 82 101 162 CMYK 80 64 6 0</p> <p> PROHASHING</p> <p>Main color sample</p>	 <p>Deep Violet Pantone 3524C Hex #332357 RGB 51 35 87 CMYK 92 100 33 29</p> <p> PROHASHING</p> <p>Main color sample</p>	 <p>Pacific Blue Pantone 2765C Hex #1c1844 RGB 28 24 68 CMYK 100 100 36 48</p> <p> PROHASHING</p> <p>Main color sample</p>
 <p>Amaranth Red Pantone 689C Hex #93386f RGB 147 56 111 CMYK 33 93 29 3</p> <p> PROHASHING</p> <p>Main color sample</p>	 <p>Mexican Pink Pantone 213C Hex #e0007c RGB 224 0 124 CMYK 0 97 15 0</p> <p> PROHASHING</p> <p>Main color sample</p>	 <p>Prussian Blue Pantone 540C Hex #0a3356 RGB 10 51 86 CMYK 100 80 38 37</p> <p> PROHASHING</p> <p>Main color sample</p>	 <p>Onyx Pantone 447C Hex #333333 RGB 51 51 51 CMYK 70 64 63 61</p> <p> PROHASHING</p> <p>Main color sample</p>